



13 Beacon Rise, East Grinstead
Offers in Region of £579,500



13 Beacon Rise

East Grinstead, East Grinstead

A modern property built over three floors offering well presented, versatile and spacious accommodation including four double bedrooms, two bathrooms, kitchen/breakfast room and living room. Outside benefits from driveway, garage and rear garden. No ongoing chain.

Council Tax band: E

Tenure: Freehold

- Spacious & Versatile Accommodation
- Four Double Bedrooms
- Two Bathrooms
- Garage & Driveway
- Built Over Three Floors
- No Ongoing Chain

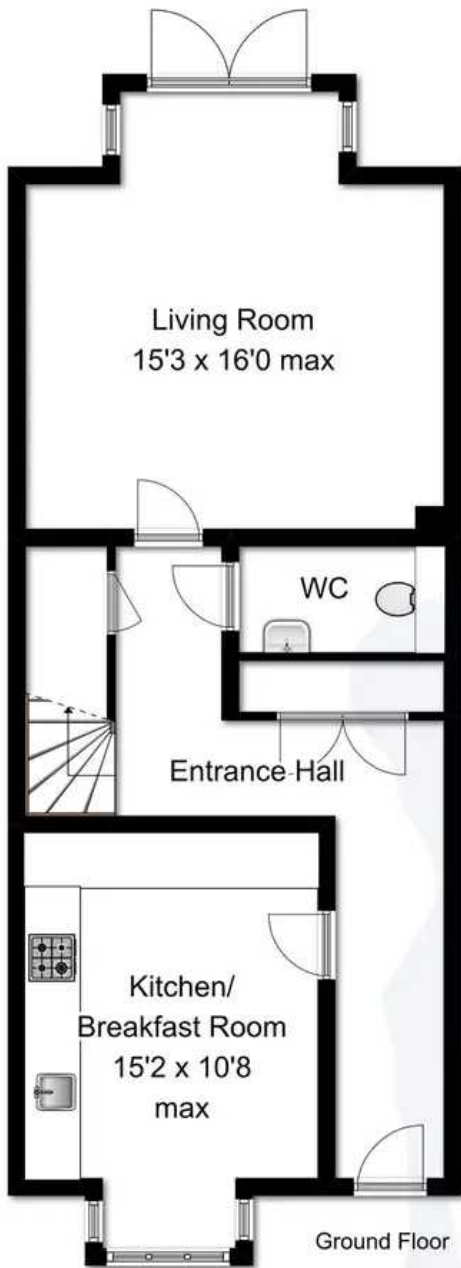




COLE'S ESTATE AGENTS
Ref 10000

This plan is for layout guidance only.
Not drawn to scale, unless stated.
Windows and door openings are
approximate.

Whilst every care is taken in the
preparation of this plan, please check
all dimensions, shapes and compass
bearings before making any decisions
reliant upon them.



ENTRANCE HALL

With tiled floor, radiator, understairs cupboard housing meters, spacious cloaks cupboard.

KITCHEN/BREAKFAST ROOM

With matching wall and base units and worktop over, 1.5 bowl sink with mixer tap inset to worktop, four burner gas hob with extractor over, oven, integrated fridge/freezer, washer/drier and dishwasher, tiled floor and radiator.

CLOAKROOM

With low level W.C., sink unit and radiator.

LIVING ROOM

Good sized lounge with doors onto garden, radiator

First Floor

BEDROOM TWO

Double room with fitted wardrobes and cupboards, radiator.

BEDROOM THREE/DINING ROOM

Double room with radiator and overlooking rear garden.

BEDROOM FOUR

Double glazed window to front, radiator.

FAMILY BATHROOM

With bath and hand shower attachment, low level W.C., wash hand basin and heated towel rail.

Second Floor

BEDROOM ONE

Double room with radiator

ENSUITE SHOWER ROOM

Enclosed shower cubicle, low level W.C, wash hand basin and heated towel rail





ENTRANCE HALL

With tiled floor, radiator, understairs cupboard housing meters, spacious cloaks cupboard.

KITCHEN/BREAKFAST ROOM

With matching wall and base units and worktop over, 1.5 bowl sink with mixer tap inset to worktop, four burner gas hob with extractor over, oven, integrated fridge/freezer, washer/drier and dishwasher, tiled floor and radiator.

CLOAKROOM

With low level W.C., sink unit and radiator.

LIVING ROOM

Good sized lounge with doors onto garden, radiator

First Floor

BEDROOM TWO

Double room with fitted wardrobes and cupboards, radiator.

BEDROOM THREE/DINING ROOM

Double room with radiator and overlooking rear garden.

BEDROOM FOUR

Double glazed window to front, radiator.

FAMILY BATHROOM

With bath and hand shower attachment, low level W.C., wash hand basin and heated towel rail.

Second Floor

BEDROOM ONE

Double room with radiator

ENSUITE SHOWER ROOM

Enclosed shower cubicle, low level W.C, wash hand basin and heated towel rail





COLE'S
ESTATE AGENTS



Cole's Estate Agents

56 High Street, East Grinstead - RH19 3DE

01342 324616 • sales@colesestateagents.com • www.colesestateagents.com/