



Post Horn Lane, Forest Row

Guide Price £625,000

Description

A charming four bedroom cottage being sold for the first time in nearly 50 years. Originally constructed over 300 years ago with additions over the years, the accommodation comprises two reception rooms, a kitchen, family bathroom, separate shower room and a utility room. Outside, the property benefits from off street parking, a double garage, workshop and outbuilding. The cottage is approximately 200 yards from the 2nd tee of the Old Course at Royal Ashdown, and the Ashdown Forest beyond. Generous gardens and a wealth of character and charm gives someone the perfect opportunity to put their own stamp on this wonderful home.

Key Features

- Four Bedroom Cottage
- Two Reception Rooms
- Family Bathroom And Separate Shower Room
- Utility Room
- Double Garage - Workshop & Outbuilding
- Pretty Gardens
- Walking Distance To Village Centre
- Close To Michael Hall And Greenfield Schools
- Solar Panels
- Desirable Location On The Doorstep of The Golf Course And Forest

Location

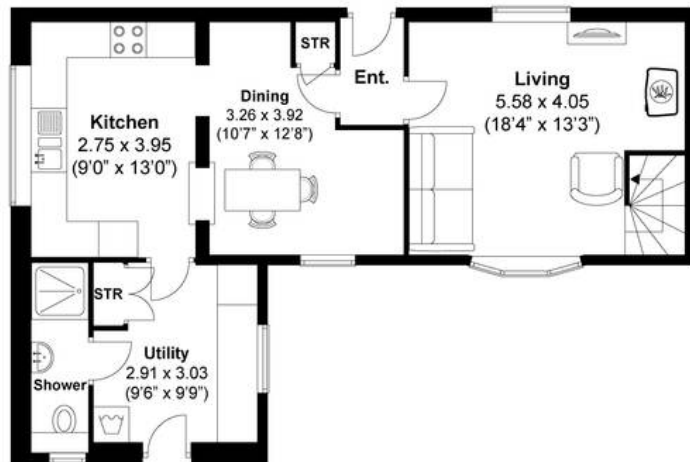
The property is situated on the outskirts of Forest Row yet within easy reach for walks on the golf course, to the village centre and local schools. The village offers a wide range of shops, restaurants and public houses that cater for every day needs. East Grinstead train station is approximately 4.5 miles and offers frequent services to East Croydon, Clapham Junction, London Bridge and London Victoria. London Gatwick is approximately 13.4 miles whilst the M25 is approximately 14.8 miles.



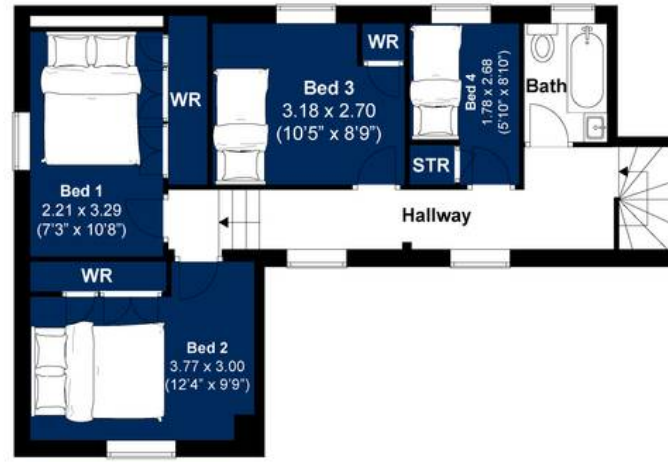
Post Horn Lane, Forest Row

Approximately 146.91 sqm (1581.34 sqft) - Total

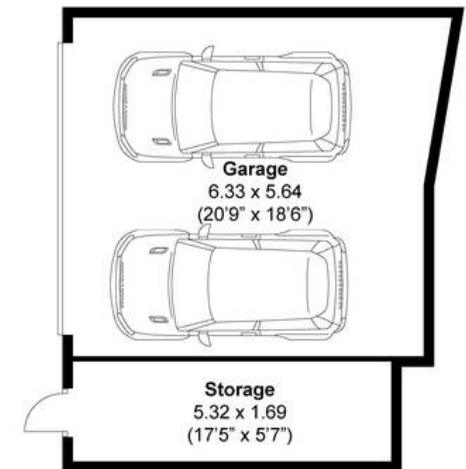
Approximately 103.68 sqm (1116 sqft) - Excluding Garage



GROUND FLOOR



FIRST FLOOR



Disclaimer:

The measurements are approximate and are for illustration purposes only. The dimensions are measured internally and in metres and feet. We do not take any responsibility for errors and/or omissions. If you require further verification please discuss with the buyer/owner of the property.

