



Great Frenches Snow Hill, Crawley Down

Guide Price £975,000



A delightful period house set in approx 2.5 acres (tbv) of it's own park and woodland. The house, which requires updating throughout, comprises three reception rooms, three bedrooms, two bathrooms and a cloakroom and utility. Further benefits include a kitchen/breakfast room, two "Old Dairy" outbuildings, an oak framed double car port and a single garage. Outside, Great Frenches is in the most delightful of settings, with woodland, lawned gardens, a pond and an abundance of mature trees, plants and shrubbery making up most of the 2.5 acres (tbv).

#### Key Features

- Unmodernised Family Home
- Approx. 2.5 Acres (tbv)
- Outbuildings, Car Port & Garage
- Three Reception Rooms
- Possibility to Extend STPP
- Stunning Parkland And Woodland





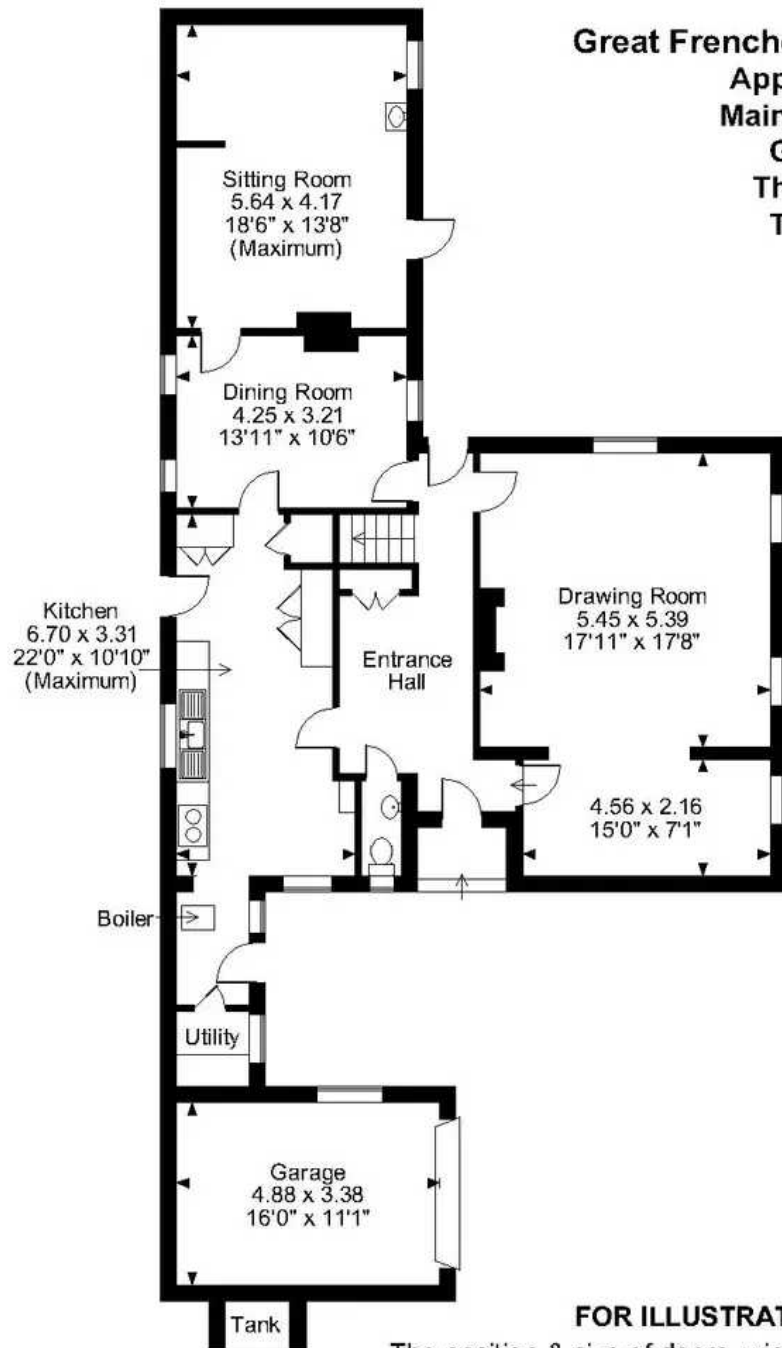
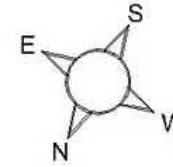
**Great Frenches, Snow Hill Crawley Down, Crawley**

**Approximate Gross Internal Area  
Main House = 2033 Sq Ft/189 Sq M**

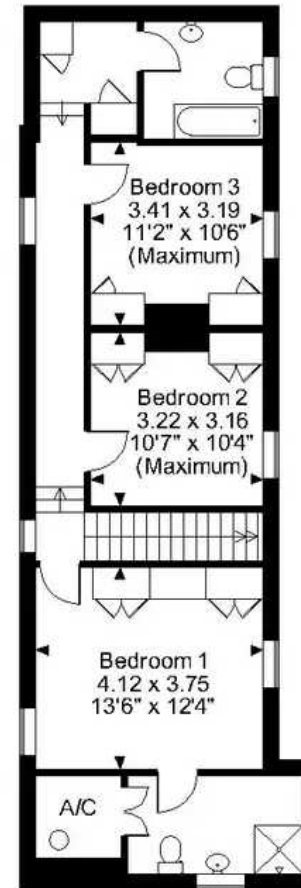
**Garage = 178 Sq Ft/16 Sq M**

**The Dairy = 339 Sq Ft/32 Sq M**

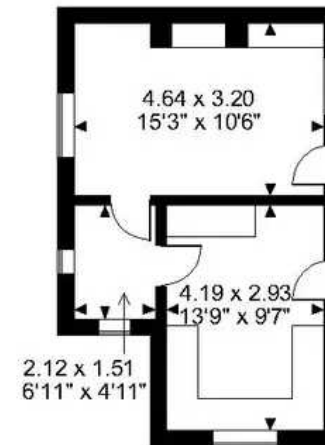
**Total = 2550 Sq Ft/237 Sq M**



**Ground Floor**



**First Floor**



**The Dairy**

**FOR ILLUSTRATIVE PURPOSES ONLY - NOT TO SCALE**

The position & size of doors, windows, appliances and other features are approximate only.

© ehouse. Unauthorised reproduction prohibited. Drawing ref. dig/8574457/LCO









## Cole's Estate Agents

56 High Street, East Grinstead - RH19 3DE

01342 324616 • [sales@colesestateagents.com](mailto:sales@colesestateagents.com) • [www.colesestateagents.com/](http://www.colesestateagents.com/)



**COLE'S**  
ESTATE AGENTS